

# Ysgol Uwchradd Bodedern



**Noson Dewisiadau CA4**

***KS4 Options Evening***



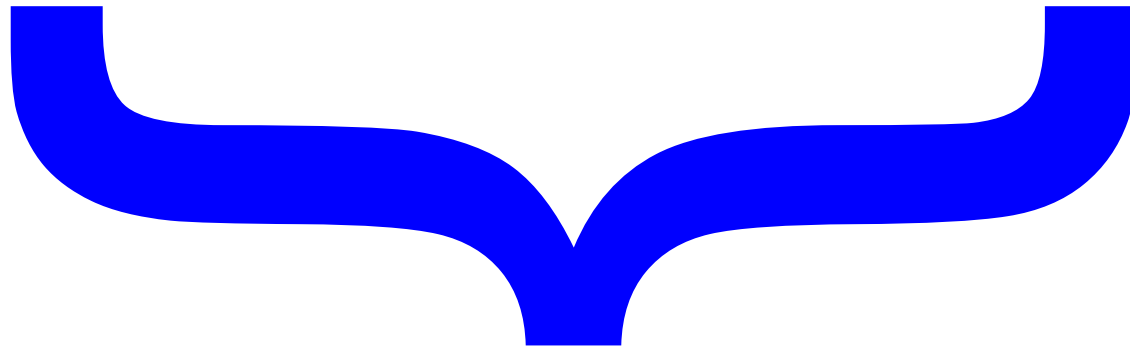
**02-02-2016**



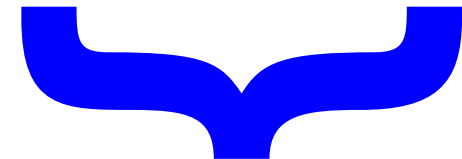
Pwnc/ Subject

Gwersi pob wythnos / Lessons per week

BLWYDDYN / YEAR 10							
Cymraeg	Saes/ Eng	Math.	TGC/ICT	Gwydd/Sc TGAU/GCSE	BAC / ABACH (PSE)	Pwnc 1/ Subject 1	Pwnc 2/ Subject 2
4	4	4	3	6	3	3	3



Pawb yn dilyn y rhain  
*All pupils follow these lessons*



Angen dewis o'r  
llwybrau  
*Need to choose from  
the paths*

# TAFLEN DEWIS BYNCIAU

## SUBJECT CHOICE FORM



Pynciau Craidd / Core Subjects		CYFRWNG = Mae'n rhaid i bawb sy'n dilyn cwrs Cymraeg iaith Gyntaf neu sydd wedi cael eu dyrchafu ddilyn o leiaf ddau bwnc drwy gyfrwng y Gymraeg. MEDIUM OF STUDY = Pupils taking Welsh First Language or who have been promoted must choose at least two subjects through the medium of Welsh.	
		<u>Cymraeg iaith + Llenyddiaeth / Welsh Language + Literature</u>	X
		<u>Saesneg iaith + Llenyddiaeth / English Language + Literature</u>	X
		<u>Mathemateg + Rhifedd / Mathematics + Numeracy</u>	
		<u>Gwyddon. Dwbl / Science Double</u>	
		<u>T.G.Ch / I.C.T</u>	
		<u>BAC Canolradd / Sylfaenol</u>	X
LLWYBR 1 PATH 1	<b>Dewis UN... Choose ONE... (TGAU / L2) @ YUB</b>	<input type="checkbox"/>	<input type="checkbox"/>
	TGAU <u>Gofal &amp; Iechyd / Health &amp; Social Care GCSE</u>		
	<u>Cerdd TGAU / Music GCSE</u>		
	<u>Daearyddiaeth TGAU / Geography GCSE</u>		
	<u>Hanes TGAU*/ History GCSE *</u>		
	<u>Addysg Gorfforol TGAU/ Physical Ed. GCSE</u>		
		<b>A... And... (TGAU / L2) @ YUB</b>	<input type="checkbox"/>
		<u>Celf TGAU / Art GCSE</u>	
		<u>D&amp;T:Dylunio Cynnyrch TGAU / D&amp;T: Product Design. GCSE</u>	
		<u>D&amp;T: Deunyddiau Gwrthiannol TGAU / D&amp;T:Resistant Materials. GCSE</u>	
		<u>Drama TGAU / Drama GCSE</u>	
		<u>Ast. Crefyddol TGAU */Rel. Studies GCSE*</u>	
		<u>Efrangeg TGAU / French GCSE</u>	
LLWYBR 2 PATH 2	<b>Dewis Un....Choose One.... (cysiau L1/L2) YSTJ / Coleg Menai)</b> <u>Prynhawn LLUN / MONDAY Afternoon</u>	<input type="checkbox"/>	<input type="checkbox"/>
	<u>BTEC Adeiladwaith (L1) / Construction (L1) [CM]</u>		
	<u>BTEC Lletygarwch ac Arlwyio (L1) / Hospitality &amp; Cat (L1) [CM].</u>		
	<u>BTEC Gwasanaethau Cyhoeddus (L2) / Public Services (L2) [CM]</u>		
	<u>BTEC Lletygarwch ac Arlwyio (L2) / Hospitality &amp; Cat (L2) [CM].</u>		
	<u>TGAU Cynllunio'r Amgylchedd Adeiladu / GCSE Designing the built Environment (L2)[YSTJ] (S)</u>		
		<b>A....And.....(TGAU / L2) @ YUB</b>	<input type="checkbox"/>
		<u>TGAU Gofal &amp; Iechyd / Health &amp; Social Care GCSE</u>	
		<u>Cerdd TGAU / Music GCSE</u>	
		<u>Daearyddiaeth TGAU / Geography GCSE</u>	
		<u>Hanes TGAU*/ History GCSE *</u>	
		<u>Addysg Gorfforol TGAU/ Physical Ed. GCSE</u>	
LLWYBR 3 PATH 3	<b>Dewis UN... Choose ONE... (cysiau L1/L2) YSTJ / Coleg Menai)</b> <u>Prynhawn MERCHER / WEDNESDAY Afternoon</u>	<input type="checkbox"/>	<input type="checkbox"/>
	<u>BTEC Technoleg Cerbyd / Vehicle Tech(L2)[CM]</u>		
	<u>BTEC Peirianeg Fodurool (L1) / Motor Veh Eng(L1).[CM]</u>		
	<u>BTEC Peirianeg (L1) / Engineering (L1) [CM]</u>		
	<u>BTEC Peirianeg (L2) / Engineering (L2) [ CM]</u>		
	<u>C&amp;G Gwallt Creadigol a Harddwch/Creative Hair and Beauty (L2) [YUB]</u>		
		<b>A....And.....(TGAU / L2) @ YUB</b>	<input type="checkbox"/>
		<u>Celf TGAU / Art GCSE</u>	
		<u>D&amp;T:Dylunio Cynnyrch TGAU / D&amp;T: Product Design. GCSE</u>	
		<u>D&amp;T: Deunyddiau Gwrthiannol TGAU / D&amp;T:Resistant Materials. GCSE</u>	
		<u>Drama TGAU / Drama GCSE</u>	
		<u>Ast. Crefyddol TGAU */Rel. Studies GCSE*</u>	
		<u>Efrangeg TGAU / French GCSE</u>	
		<u>Sgiliau Byw'n Annibynnol / Independent Living Skills [CM]</u>	

# Llwybr 1- Pynciau Ysgol

## Path 1 – School Subjects



LLWYBR 1 PATH 1	<u>Dewis UN... Choose ONE...</u> (TGAU / L2) @ YUB		<u>A... And...</u> (TGAU / L2) @ YUB		
	TGAU <u>Gofal &amp; Iechyd</u> / Health & Social Care GCSE			Celf TGAU / Art GCSE	
	<u>Cerdd</u> TGAU / Music GCSE			<u>D&amp;T:Dylunio Cynnyrch</u> TGAU / <i>D&amp;T: Product Design. GCSE</i>	
	<u>Daearyddiaeth</u> TGAU / Geography GCSE			D&T: <u>Deunyddiau Gwrthiannol</u> TGAU / <i>D&amp;T:Resistant Materials. GCSE</i>	
	Hanes TGAU*/ History GCSE *			Drama TGAU / Drama GCSE	
	<u>Addysg Gorfforol</u> TGAU/ Physical Ed. GCSE			<u>Ast. Crefyddol</u> TGAU */Rel. Studies GCSE*	
				<u>Ffrangeg</u> TGAU / French GCSE	

# Llwybr 2- Pwnc Ysgol a Coleg Prynhawn Llun

## Path 2 – School Subject and College Monday Afternoon



BTEC <u>Adeiladwaith</u> (L1) / Construction (L1) [CM]	TGAU <u>Gofal &amp; Iechyd</u> / Health & Social Care GCSE
BTEC <u>Lletygarwch ac Arlwyo</u> (L1) / Hospitality & Cat (L1) [CM].	<u>Cerdd</u> TGAU / Music GCSE
BTEC <u>Gwasanaethau Cyhoeddus</u> (L2) / Public Services (L2) [CM]	<u>Daearyddiaeth</u> TGAU / Geography GCSE
BTEC <u>Lletygarwch ac Arlwyo</u> (L2) / Hospitality & Cat (L2) [CM].	Hanes TGAU*/ History GCSE *
TGAU <u>Cynllunio'r Amgylchedd Adeiladu</u> / GCSE Designing the built Environment (L2)[YSTJ] (S)	<u>Addysg Gorfforol</u> TGAU/ Physical Ed. GCSE

# Llwybr 3- Pwnc Ysgol a Coleg Prynhawn Mercher

## Path 3 – School Subject and College Wednesday Afternoon



LLWYBR 3 PATH 3	<u>Dewis UN... Choose ONE...</u> (cyrsiau L1/L2) YSTJ / Coleg Menai Prynhawn MERCHER / WEDNESDAY Afternoon	C	E	A....And.....(TGAU / L2) @ YUB	C	E
	<u>BTEC Technoleg Cerbyd /Vehicle Tech(L2)[CM]</u>			<u>Celf TGAU / Art GCSE</u>		
	<u>BTEC Peirianeg Fodurool (L1) / Motor Veh Eng(L1).[CM]</u>			<u>D&amp;T:Dylunio Cynnyrch TGAU / D&amp;T: Product Design. GCSE</u>		
	<u>BTEC Peirianeg (L1) / Engineering (L1) [CM]</u>			<u>D&amp;T: Deunyddiau Gwrthiannol TGAU / D&amp;T:Resistant Materials. GCSE</u>		
	<u>BTEC Peirianeg (L2) / Engineering (L2) [ CM]</u>			<u>Drama TGAU / Drama GCSE</u>		
	<u>C&amp;G Gwallt a Harddwch Creadigol /Creative Hair and Beauty (L2) [YUB]</u>			<u>Ast. Crefyddol TGAU */Rel. Studies GCSE*</u>		
	<u>Sgiliau Byw'n Annibynnol / Independent Living Skills [CM]</u>			<u>Ffrangeg TGAU / French GCSE</u>		

# CYRSIAU YSGOL UWCHRADD BODEDERN COURSES



<b>Cymraeg <i>Welsh</i> (TGAU/GCSE)</b>	<b>Saesneg <i>English</i> (TGAU/GCSE)</b>	<b>Mathemateg <i>Mathematics</i> (TGAU/GCSE)</b>	<b>Gwyddoniaeth <i>Science</i> (TGAU/GCSE)</b>	<b>T.G.C <i>I.C.T</i> (TGAU/GCSE)</b>	<b>B A C</b>
---	---	--	--	---	----------------------

**Hanes / History  
(TGAU / GCSE)**

**Addysg Gorff / P.E  
(TGAU/ GCSE)**

**Astudiaethau Crefyddol  
(TGAU / GCSE)**

**Cerdd / Music  
(TGAU/ GCSE)**

**Ffrangeg (TGAU/ GCSE)**

**Iechyd a Gofal  
Cymdeithasol /  
*Health & Soc. Care*  
(TGAU/ GCSE)**

**Gwallt a Harddwch  
Creadigol / Creative Hair  
and Beauty  
(C & G – L2)**

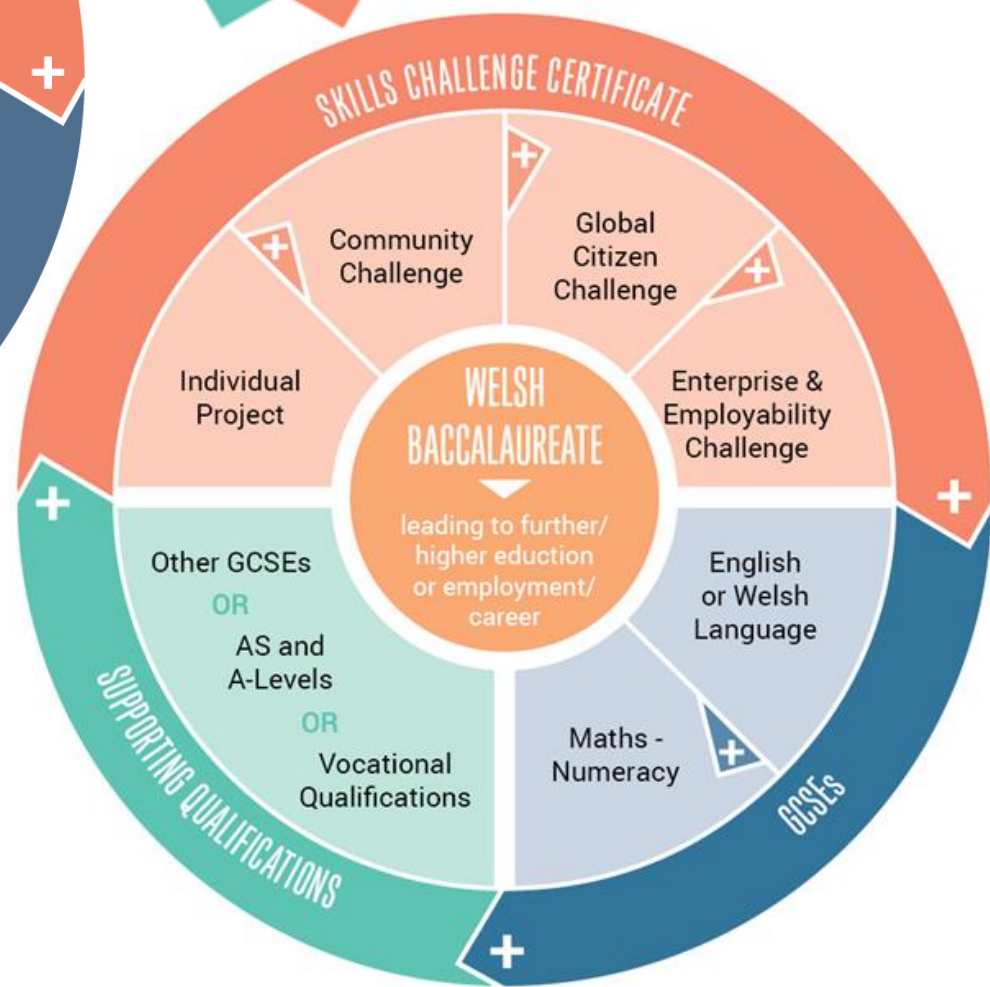
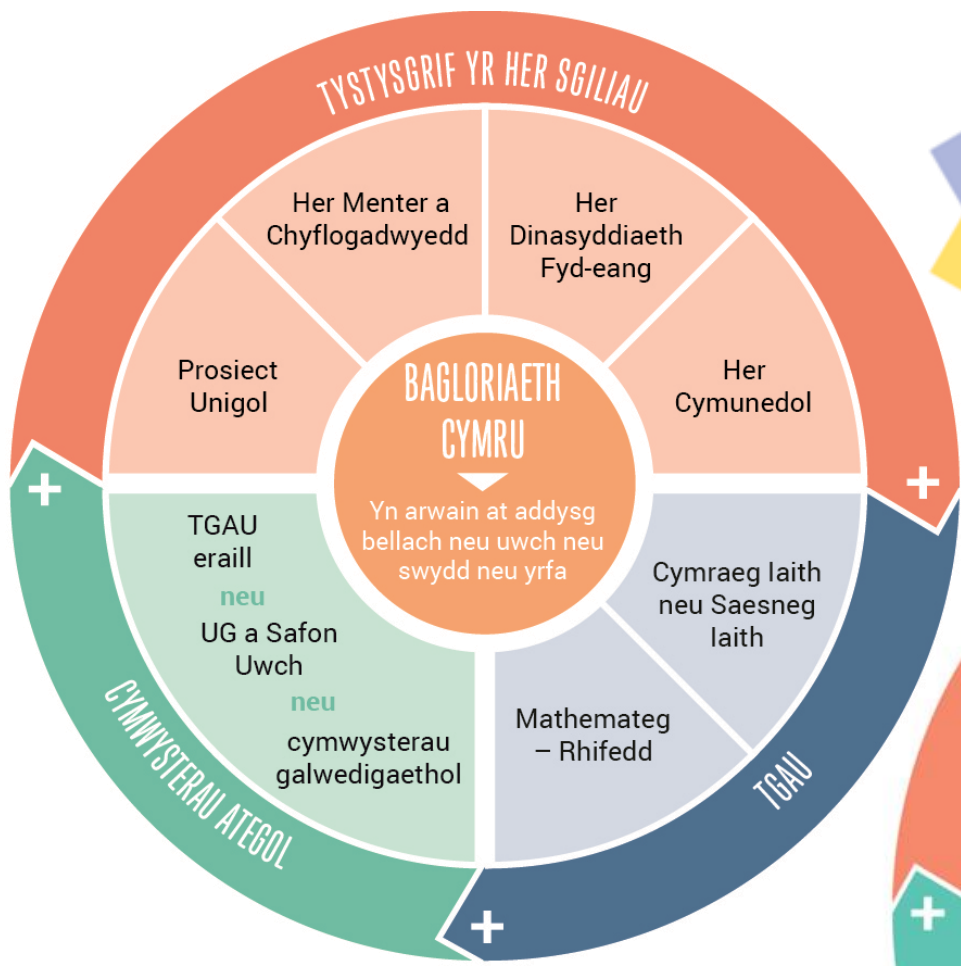
**Celf / Art  
(TGAU/ GCSE)**

**Drama  
(TGAU/ GCSE)**

**Daearyddiaeth /  
*Geography*  
(TGAU / GCSE)**

**D&T-Dylunio Cynnyrch  
*/ Product Design*  
(TGAU/ GCSE)**

**D&T- Gwrthiannol /  
*Resistant Materials*  
(TGAU / GCSE)**



**CA4 – Cenedlaethol neu Sylfaen**  
**KS4 – National or Foundation**

**CA5 – Uwch**  
**KS5 - Advanced**



# CYRSIAU CONSORTIWM / CONSORTIUM COURSES



BTEC Adeiladwaith (L1) Construction (L1) [CM]	CM LLANGEFNI LLUN / MONDAY 1.25pm - 4.25pm
BTEC Lletygarwch ac Arlwyo (L1) Hospitality & Cat (L1) [CM].	CM BANGOR LLUN / MONDAY 1.10pm - 4.10pm
BTEC Gwasanaethau Cyhoeddus (L2) Public Services (L2) [CM]	CM BANGOR LLUN / MONDAY 1.10pm - 4.10pm
BTEC Lletygarwch ac Arlwyo (L2) Hospitality & Cat (L2) [CM].	CM BANGOR LLUN / MONDAY 1.10pm - 4.10pm
TGAU Cynllunio'r Amgylchedd Adeiladu GCSE Design and the built Environment (L2)[YSTJ]	YSTJ Amlwch LLUN / MONDAY 1.40pm - 3.20pm
BTEC Technoleg Cerbyd (L2) Vehicle Tech(L2)[CM]	CM LLANGEFNI MERCER / WEDNESDAY 1.25pm - 4.25pm
BTEC Peirianeg Foduro (L1) Motor Vehicle Eng(L1).[CM]	CM LLANGEFNI MERCER / WEDNESDAY 1.25pm - 4.25pm
BTEC Peirianeg (L1) Engineering (L1) [CM]	CM BANGOR MERCER / WEDNESDAY 1.10pm - 4.10pm
BTEC Peirianeg (L2) Engineering (L2) [ CM]	CM BANGOR MERCER / WEDNESDAY 1.10pm - 4.10pm
C&G Gwallt a Harddwch Creadigol Creative Hair and Beauty (L2) [YUB]	YUB MERCER / WEDNESDAY 1.10pm - 4.10pm
Sgiliau Byw'n Annibynnol Independent Living Skills [CM]	CM LLANGEFNI MERCER / WEDNESDAY 1.25pm - 4.25pm



# Ysgol Uwchradd Bodedern

Hafan

Newyddion

Ysgol

Disgyblion

Staff

Rhieni a'r Gymuned

Llywodraethwyr

Ysgol Uwchradd Bodedern  
Hau I Fedi

gyrfacymru.com

Hafan

Eich Gyrfa

Swyddi a Hyfforddiant

Addysg a C

Pa bynciau dylwn  
eu dewis?

Sut ydych chi  
gwneud penderfyniadau?

Opsiynau Blwyddyn 9 >

Dewiswch pynciau ym mlwyddyn 9? Gallwn helpu!

[www.ysgoluwchraddbodedern.org](http://www.ysgoluwchraddbodedern.org)

[www.gyrfacymru.com](http://www.gyrfacymru.com)

Am wybodaeth defnyddiol / For useful information

# CEFNOGAETH / SUPPORT



- Cyfarfod rhieni heno / Tonight's parents meeting.
- Mrs Alma Williams, Coleg Llandrillo Menai
- Mrs Sue Legge-Hughes, Gyrfa Cymru
- Safle wê yr ysgol / School website  
[www.ysgoluwchraddbodedern.org](http://www.ysgoluwchraddbodedern.org)
- Safle wê Gyrfa Cymru / Careers Wales website  
[www.gyrfacymru.com](http://www.gyrfacymru.com)
- Tiwtor Dosbarth / Form Tutor
- Mr Eurwyn Hughes

## Dyddiadau Pwysig / Important Dates

Drafft cyntaf ffurflen dewis / First draft choice form – 12/02/2016

Cwrs blasu Coleg Menai / Coleg Menai Taster Day - 25/02/2016

**Cadarnhad dewisiadau drwy lythyr – Mehefin 2016**  
*Confirmation of choices by letter - June 2016*